

**1000 - TRAILS**

**CITY OF RANCHO CUCAMONGA, CALIFORNIA**

		<b>1000</b>
--	--	-------------

1. VERTICAL GRADE: The following grades shall be observed:
  - 0-5% optimum
  - 10% maximum for distances over 500 feet.
  - 15% maximum for distances limited to 500 feet or less.
  - 20% maximum permitted only in extreme cases and for short distances under 100 feet, and only in cases where no vehicle access is to be expected.
2. CROSS SECTION: 2-4% optimum, 6% maximum in approved location only.
3. DRAINAGE: Where trail gradient exceeds 4%, water bars, splash curbs or other diversionary devices may be required. Location of drainage devices to be reviewed and approved by the Trails Advisory Committee.
4. SIDE SLOPE CUTS and FILL: 2:1 maximum; 2% maximum between curb and trail. 5:1 max. turf & 3:1 max. shrubs/ground cover behind trail. Occasional slope variations will be considered on a case by case basis and will require approval by the City Engineer.
5. SURFACING: Trail surface shall be decomposed granite with 4 inch minimum base. Remove rocks and debris and grade surface smooth.
6. CLEARANCE: All trees shall maintain a 10 foot minimum clearance. Adequate sight distance to be maintained at all intersections and drive approaches. Fence line shall end 10 feet back of the B.C.R. or E.C.R. in 20 foot easements. In smaller easements, determination should be made case by case. Fence line shall end 5 feet back from the top of the "X" at drive approaches. Adequate access to utilities should be maintained. Fence line shall end 2 feet to either side of fire hydrant and 1 foot to either side of any street light or utility pole.
7. FLOOD and DRAINAGE CHANNEL CROSSING: Where trail must cross existing or proposed drainage channels, the continuity of the trail shall be maintained by the construction of an appropriate crossing such as bridges, ramp ways, culvert etc. Wood or transverse "medium broom" finish concrete shall be used to prevent slipping (no metal surfaces permitted). Natural streambed crossings should be left as natural as possible.
8. TRAIL ENTRANCE: Trail entrances shall be designed to provide for equestrian, pedestrian/hiking use and shall discourage motor vehicle and motorcycle access, except Local Feeder Trails shall provide one or more means of unobstructed vehicular access for service vehicles. Access locations subject to approval by the Trails Advisory Committee. Refer to standard drawings for barriers and signs. Where there is no barrier, the trail should be posted.
10. CONCRETE APRONS: For drive approaches at trail entrances or at drainage crossings, concrete aprons shall be a transverse "medium broom" finish.
11. REDWOOD HEADER /CONCRETE HEADER: Shall be 6 inch concrete header or a redwood header between the asphalt service road and the equestrian trail surface. Asphalt must have adequate structural section if built by developer.
12. SPECIAL NOTES: Most Regional Trails follow existing or planned flood control facilities constructed by the San Bernardino County Flood Control District and Army Corps of Engineers. Therefore, any construction within their rights-of-way requires review and approval by those agencies and is subject to their standards and policies.

## CITY OF RANCHO CUCAMONGA, CALIFORNIA

APPROVED BY:

### TRAIL NOTES

STANDARD PLAN

1001

CITY ENGINEER  
R.C.E. 24953

DATE

USE WITH STANDARD SPECIFICATIONS FOR PUBLIC WORKS CONSTRUCTION

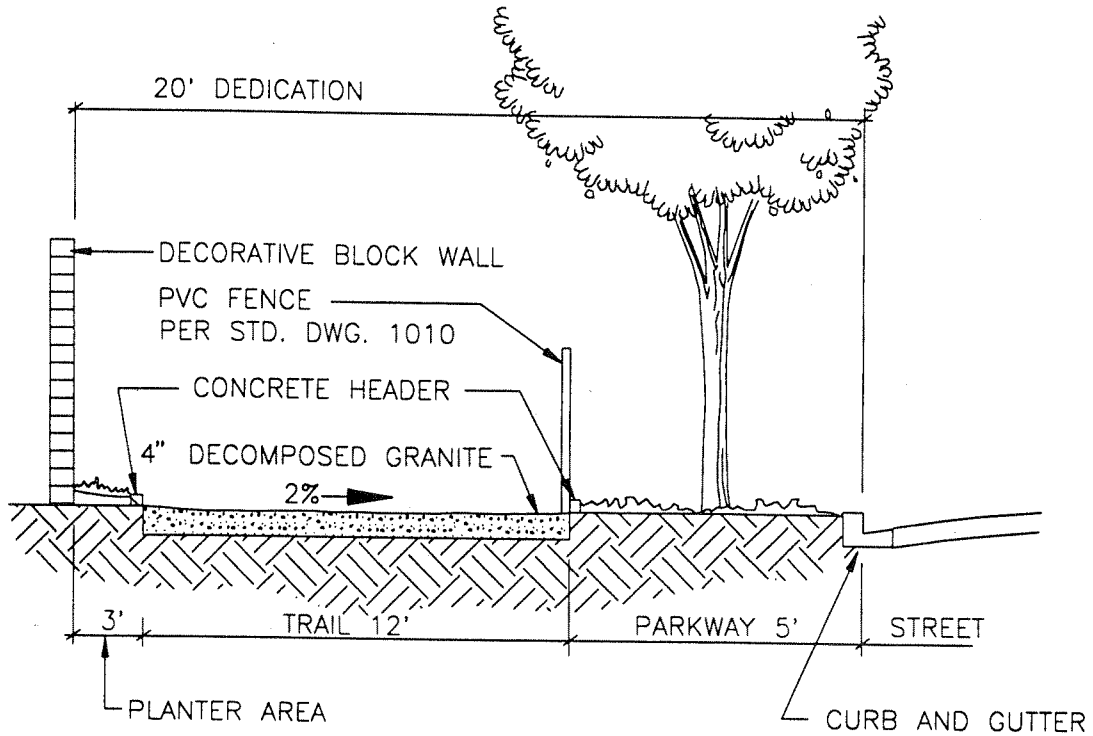
SHEET 1 OF 1

6-20-95

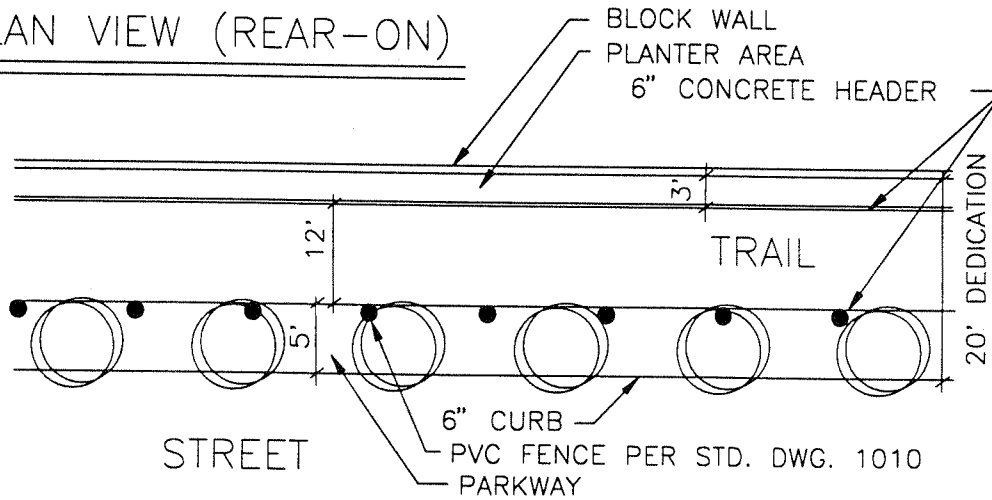
7-20-92

REVISED

TYPICAL SECTION



PLAN VIEW (REAR-ON)



1. ALL LANDSCAPE AREAS SHALL BE PLANTED AND IRRIGATED WITH MATERIALS APPROVED BY THE CITY
2. APPROVED STREET TREES PLACED PER CITY STD. DWG. 501
3. TOXIC PLANTS ARE PROHIBITED.
4. TRAIL SURFACE IS COMPOSED OF 4" DECOMPOSED GRANITE, GRADE SMOOTH TO 90 PERCENT COMPACTION AND TREATED WITH A SOIL STABILIZER.
5. PLAN VIEW TYPICAL OF REAR-ON, SEE STD. DWG. 1003 FOR FRONT-ON AND SIDE-ON.
6. SEE TRAIL NOTES STD. 1001.

**CITY OF RANCHO CUCAMONGA, CALIFORNIA**

APPROVED BY:

*Mr. Joneil* 7/15/95  
 CITY ENGINEER DATE  
 R.C.E. 24953

**20' COMMUNITY TRAIL  
 REVERSE FRONTAGE PARKWAYS**

USE WITH STANDARD SPECIFICATIONS FOR PUBLIC WORKS CONSTRUCTION

STANDARD PLAN

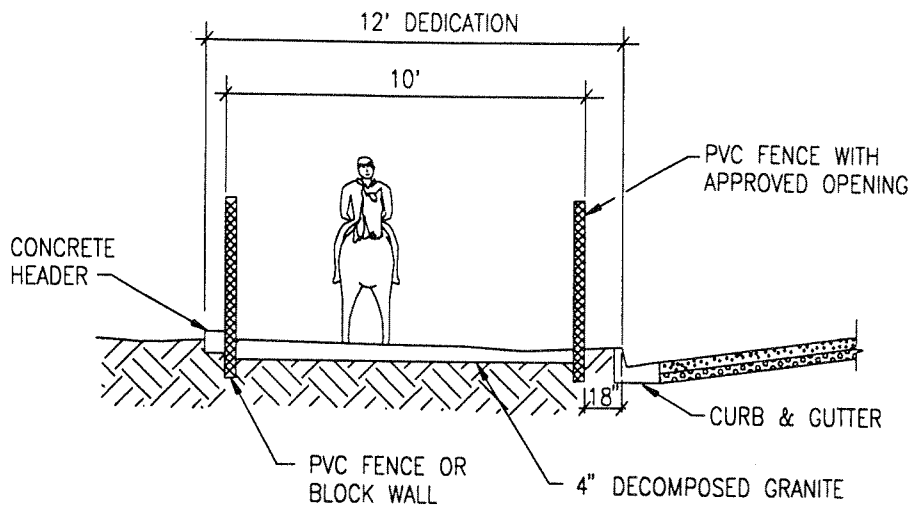
1002-A

SHEET 1 OF 1

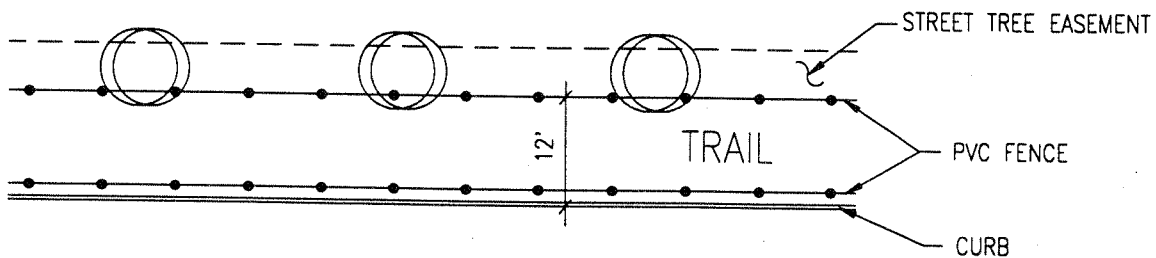
6-20-95

7-20-92

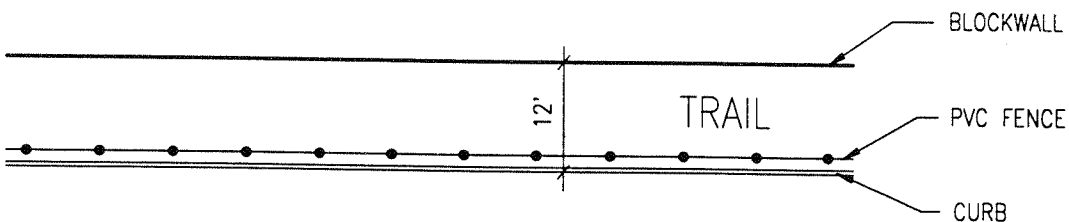
REVISED



TYPICAL SECTION



FRONT-ON



REAR-ON

NOTE:

SEE TRAIL NOTES STD. 1001

REVISIONS  
6-20-95

7-20-92

REVISIONS

CITY OF RANCHO CUCAMONGA, CALIFORNIA

APPROVED BY:

*W. J. Jones*  
CITY ENGINEER  
R.C.E. 24953  
DATE 7/13/95

COMMUNITY TRAIL:  
PARKWAY 12'

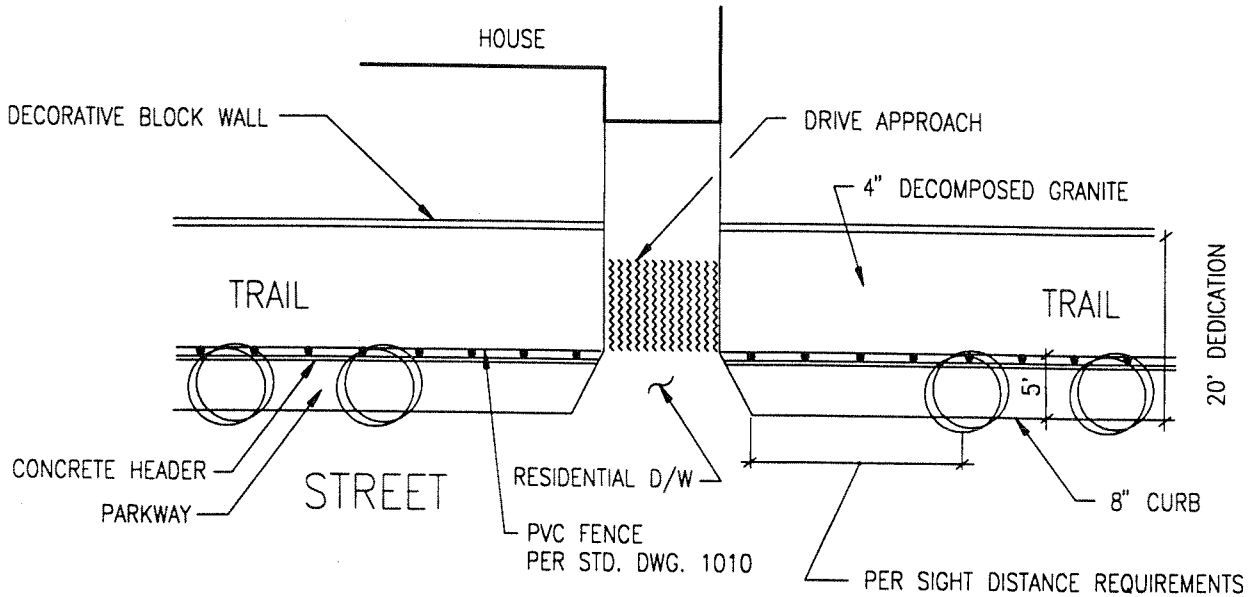
USE WITH STANDARD SPECIFICATIONS FOR PUBLIC WORKS CONSTRUCTION

STANDARD PLAN

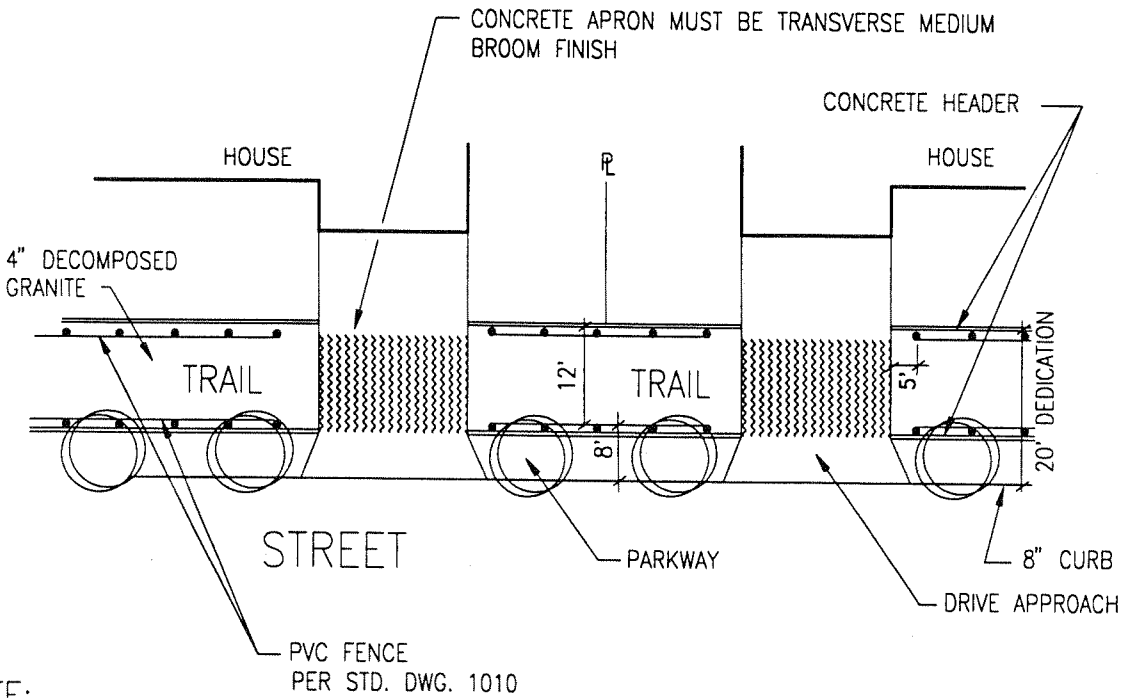
1002-B

SHEET 1 OF 1

SIDE-ON



FRONT-ON



NOTE:

SEE TRAIL NOTES STD. 1001

**CITY OF RANCHO CUCAMONGA, CALIFORNIA**

APPROVED BY:

**COMMUNITY TRAIL:**

STANDARD PLAN

CITY ENGINEER  
R.C.E. 24953

DATE

**FRONT AND SIDE AREA PARKWAYS**

1003

USE WITH STANDARD SPECIFICATIONS FOR PUBLIC WORKS CONSTRUCTION

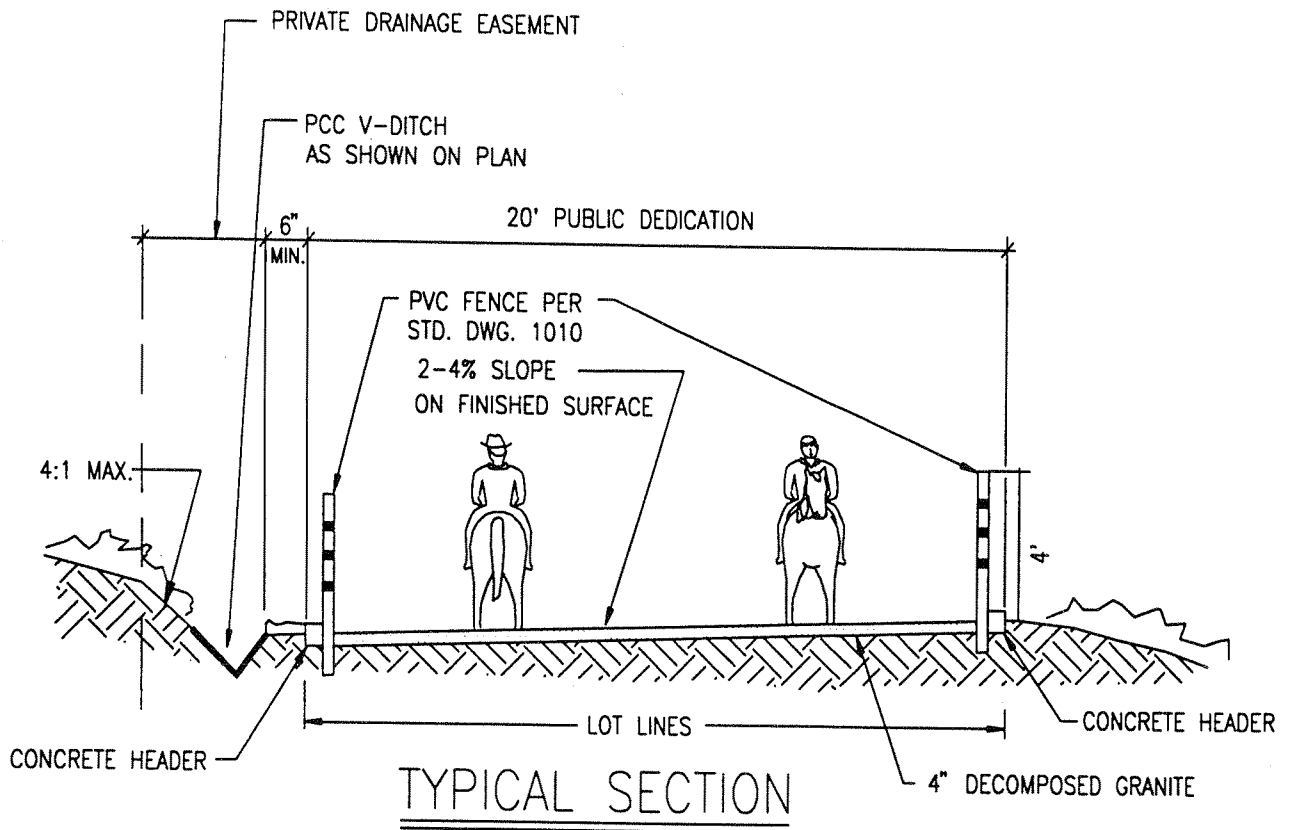
SHEET 1 OF 1

6-20-95

7-20-92

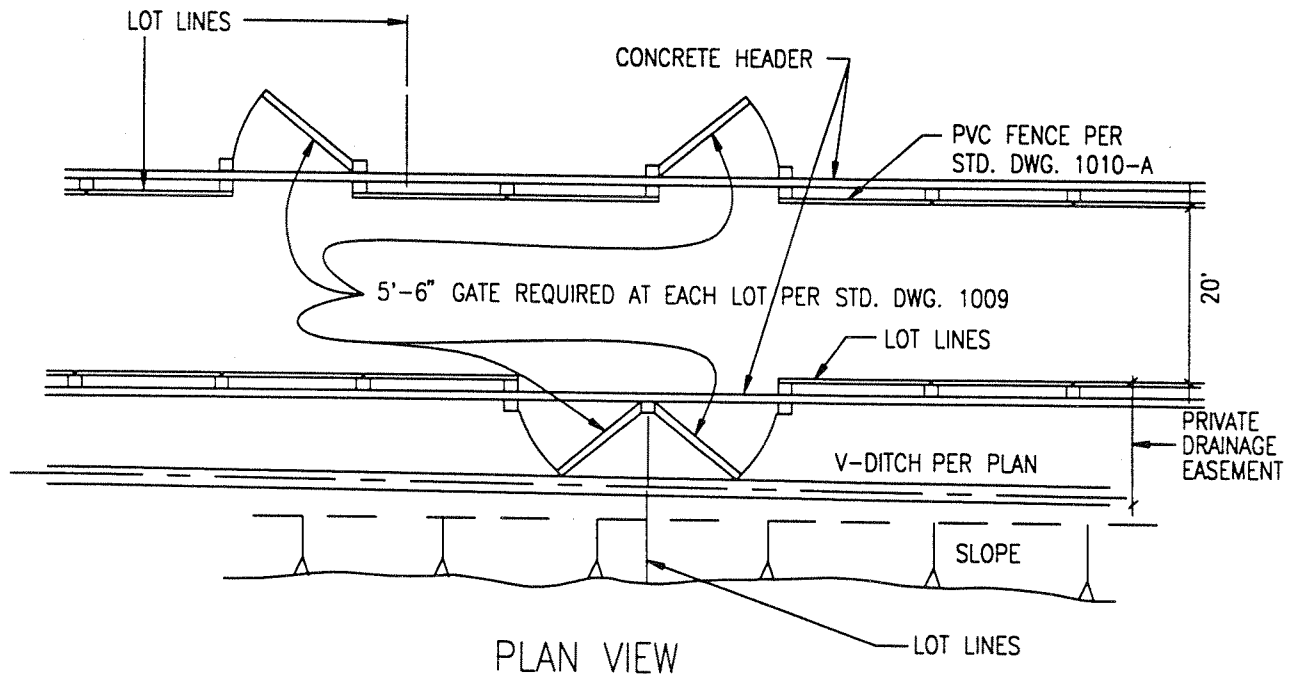
REVISION

*W. Jones* 7/27/95



TYPICAL SECTION

DEVELOPER MAY INSTALL ALTERNATE DECORATIVE WALL TO DEFINE TRAIL EASEMENT.



PLAN VIEW

NOTE:  
SEE TRAIL NOTES STD. 1001

REVISED 6-20-95 7-24-95

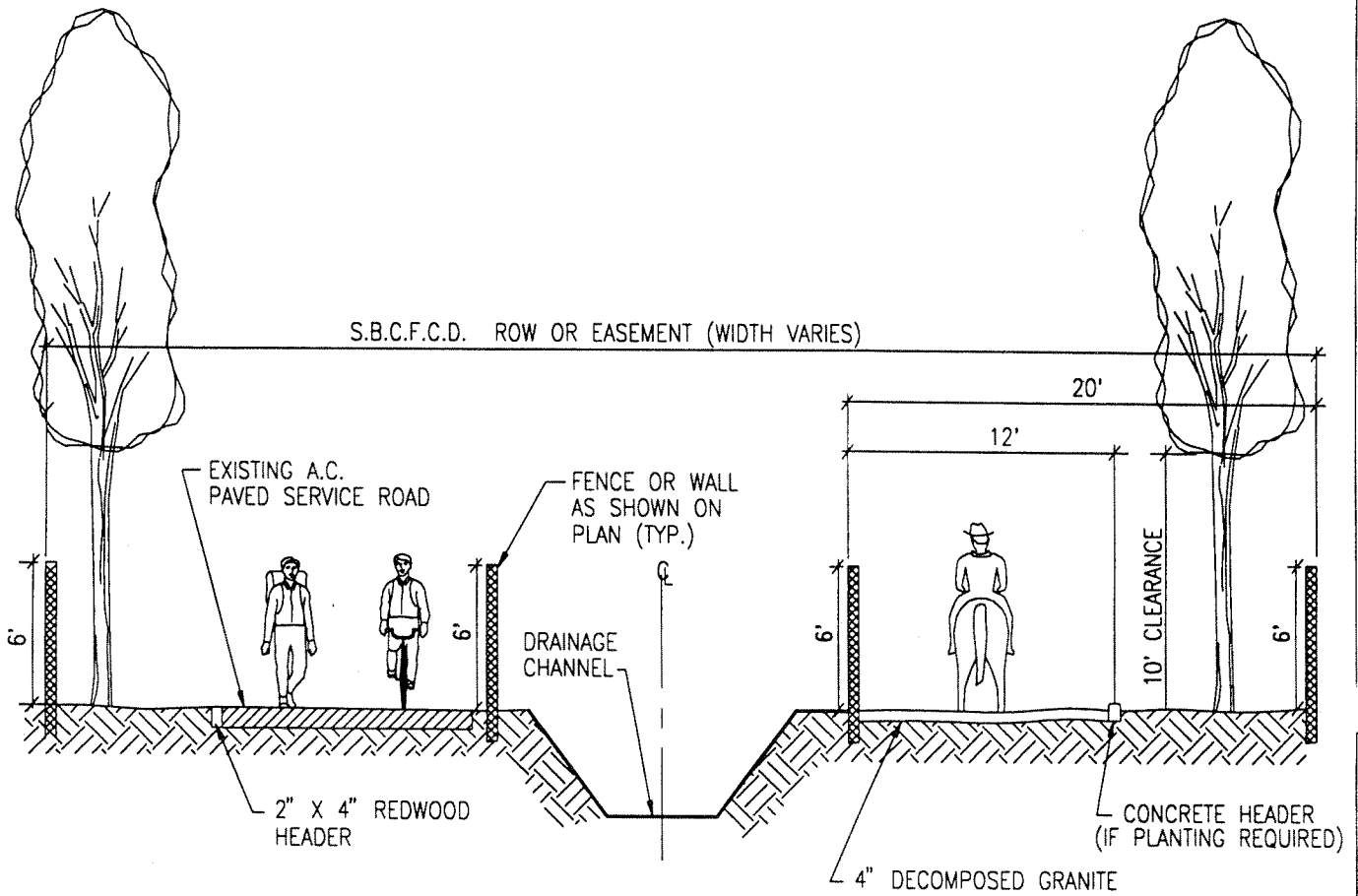
CITY OF RANCHO CUCAMONGA, CALIFORNIA

APPROVED BY:  
*W. J. Med* 8/3/95  
CITY ENGINEER DATE  
R.C.E. 24953

COMMUNITY TRAIL:  
INTERIOR APPLICATIONS

USE WITH STANDARD SPECIFICATIONS FOR PUBLIC WORKS CONSTRUCTION

STANDARD PLAN  
1004  
SHEET 1 OF 1



TYPICAL SECTION

NOTE:  
SEE TRAIL NOTES STD. 1001

REVISIONS  
7-20-92  
6-20-95

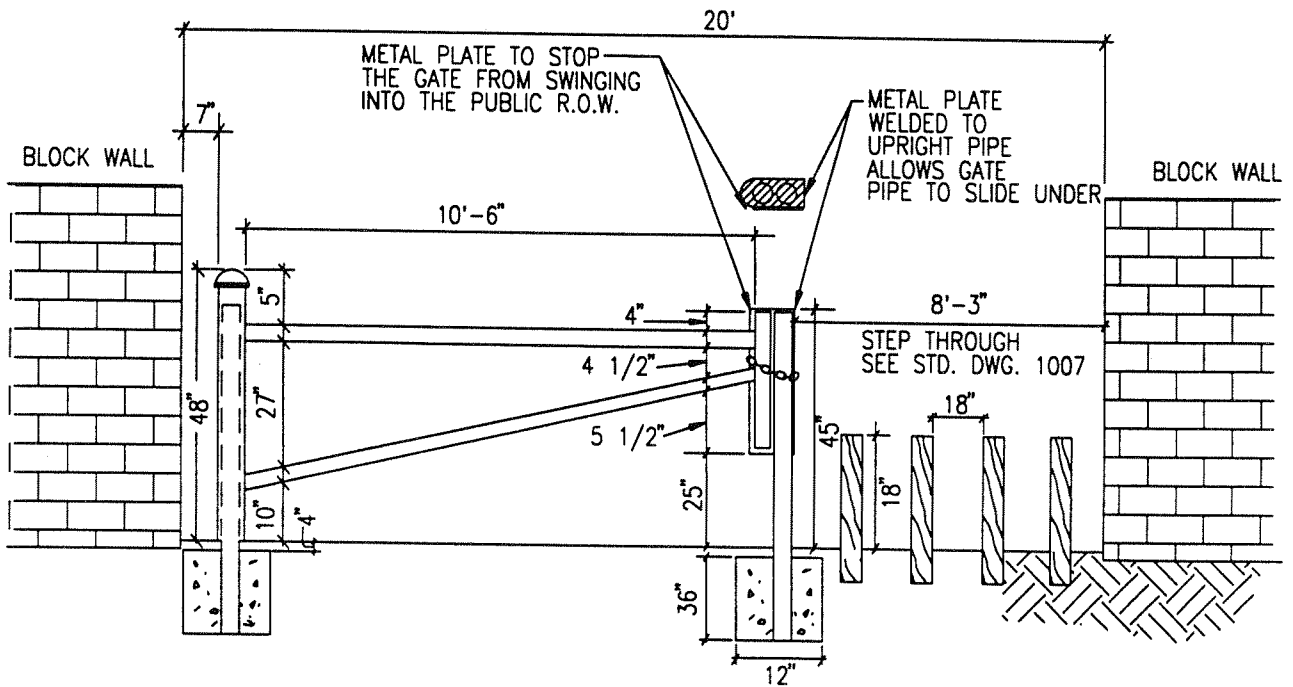
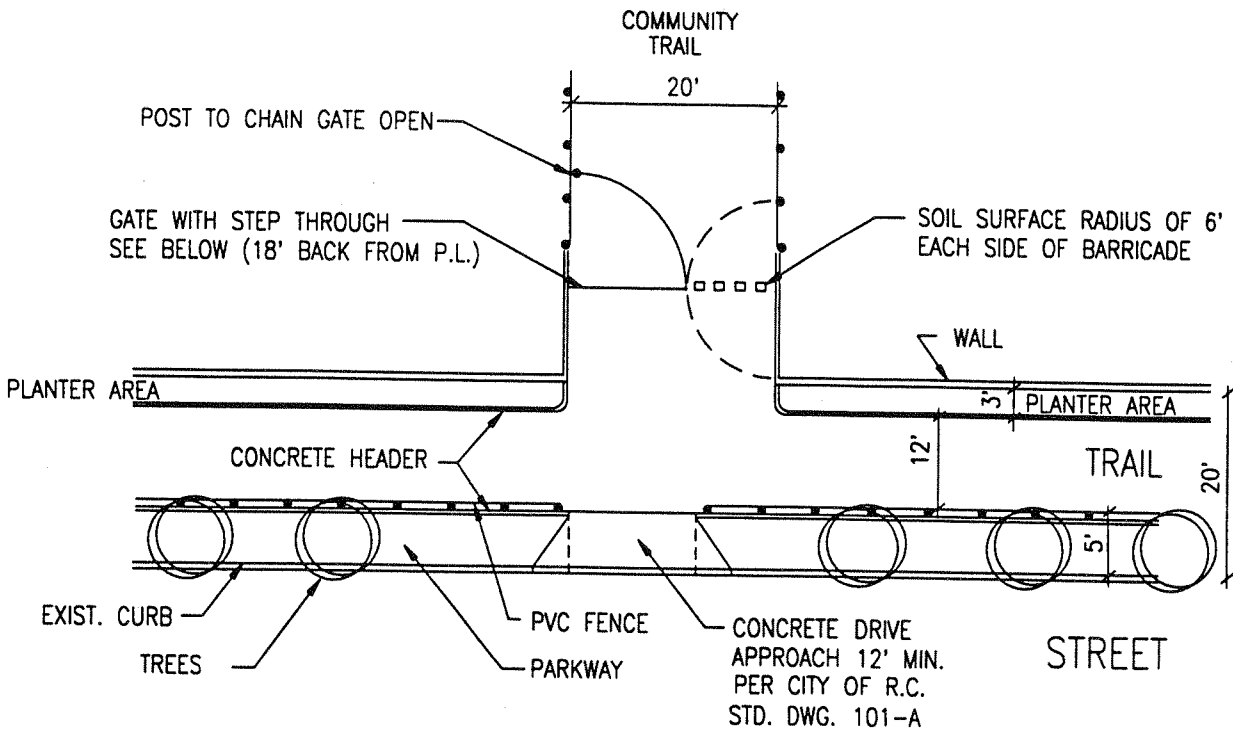
CITY OF RANCHO CUCAMONGA, CALIFORNIA

APPROVED BY:  
*W. J. Jones* 7/13/95  
CITY ENGINEER  
R.C.E. 24953

REGIONAL TRAIL:  
WITHIN FCD EASEMENT

USE WITH STANDARD SPECIFICATIONS FOR PUBLIC WORKS CONSTRUCTION

STANDARD PLAN  
1005  
SHEET 1 OF 1



**NOTES:**

1. GATE CONSTRUCTED OF 2 1/2" GALVANIZED STEEL PIPE.
2. HINGE CREATED BY WELDING CROSS MEMBERS TO A 3" GALVANIZED STEEL PIPE SLEEVE WITH CAP SLIPPED OVER 2 1/2" UPRIGHT GATE POST.
3. SINK POSTS 40". GATE SHALL NOT SWING INTO PUBLIC R.O.W.
4. CHAIN SHALL BE 3/8" X 1 3/4" X 1 1/4" MILD STEEL AT 18" LONG.
5. LOCK SHALL BE PROVIDED BY THE CITY.
6. SEE TRAIL NOTES STD. NO. 1001

**CITY OF RANCHO CUCAMONGA, CALIFORNIA**

APPROVED BY:

*W. J. Neil*  
CITY ENGINEER  
R.C.E. 24953

8/3/95  
DATE

**COMMUNITY TRAIL: VEHICLE GATE  
WITH SIDE ACCESS**

USE WITH STANDARD SPECIFICATIONS FOR PUBLIC WORKS CONSTRUCTION

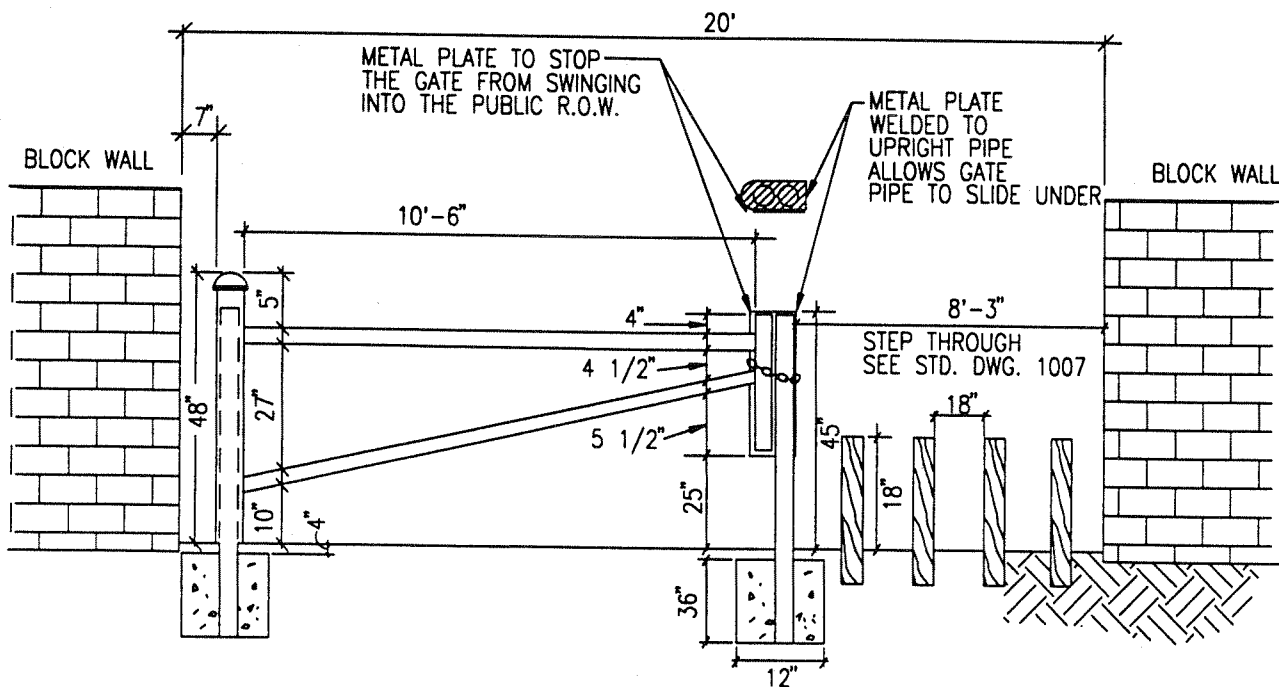
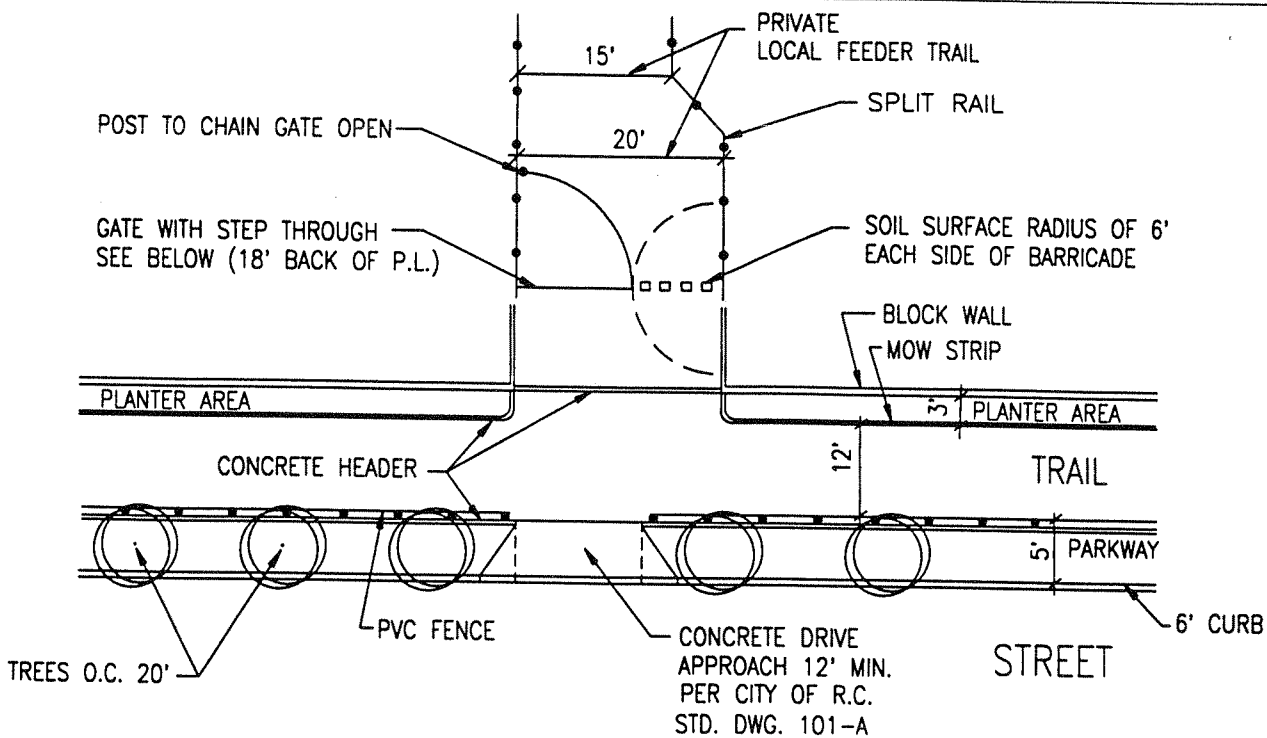
STANDARD PLAN

1006-A

SHEET 1 OF 1

REVISED 7-20-92 6-20-95 7-24-95





**NOTES:**

1. GATE CONSTRUCTED OF 2 1/2" GALVANIZED STEEL PIPE.
2. HINGE CREATED BY WELDING CROSS MEMBERS TO A 3" GALVANIZED STEEL PIPE SLEEVE WITH CAP SLIPPED OVER 2 1/2" UPRIGHT GATE POST
3. SINK POSTS 40". GATE SHALL NOT SWING INTO PUBLIC R.O.W.
4. CHAIN SHALL BE 3/8" X 1 3/4" X 1 1/4" MILD STEEL AT 18" LONG
5. LOCK SHALL BE PROVIDED BY THE CITY.
6. SEE TRAIL NOTES STD. NO. 1001

**CITY OF RANCHO CUCAMONGA, CALIFORNIA**

APPROVED BY:

**FEEDER TRAIL 20' TO 15' TRANSITION:  
VEHICLE GATE WITH SIDE ACCESS**

STANDARD PLAN

CITY ENGINEER  
R.C.E. 24953

DATE

USE WITH STANDARD SPECIFICATIONS FOR PUBLIC WORKS CONSTRUCTION

1006-B

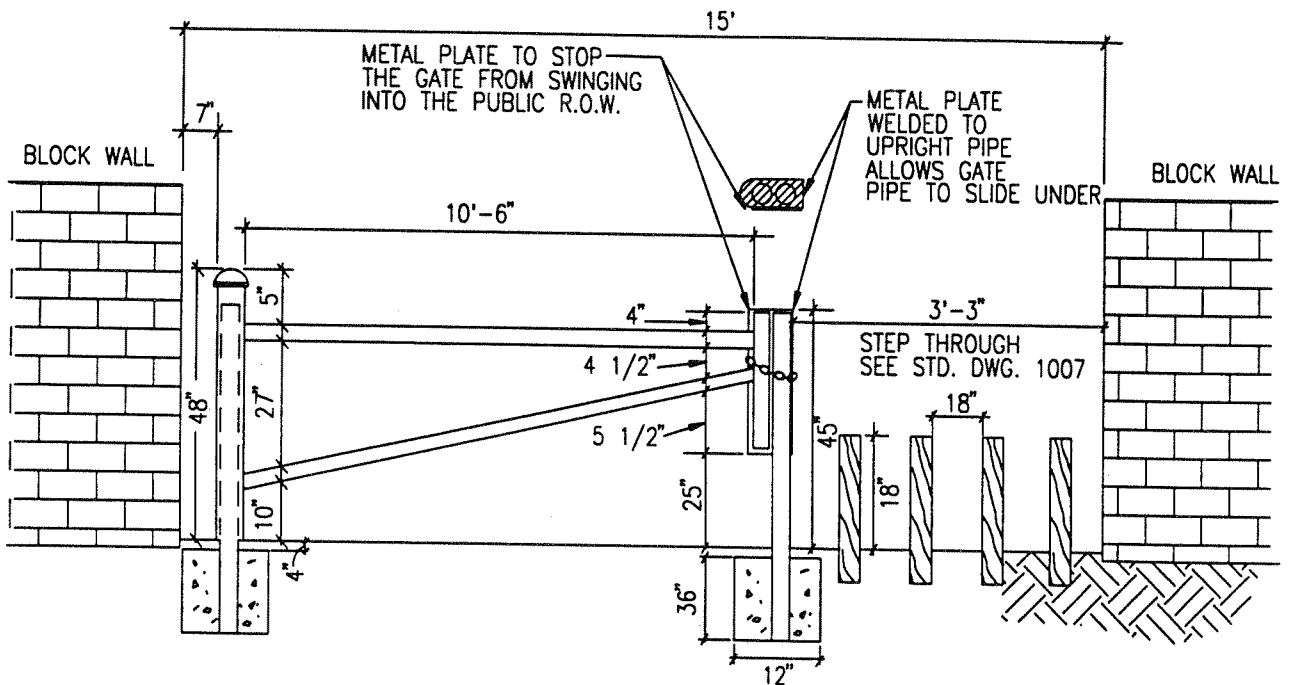
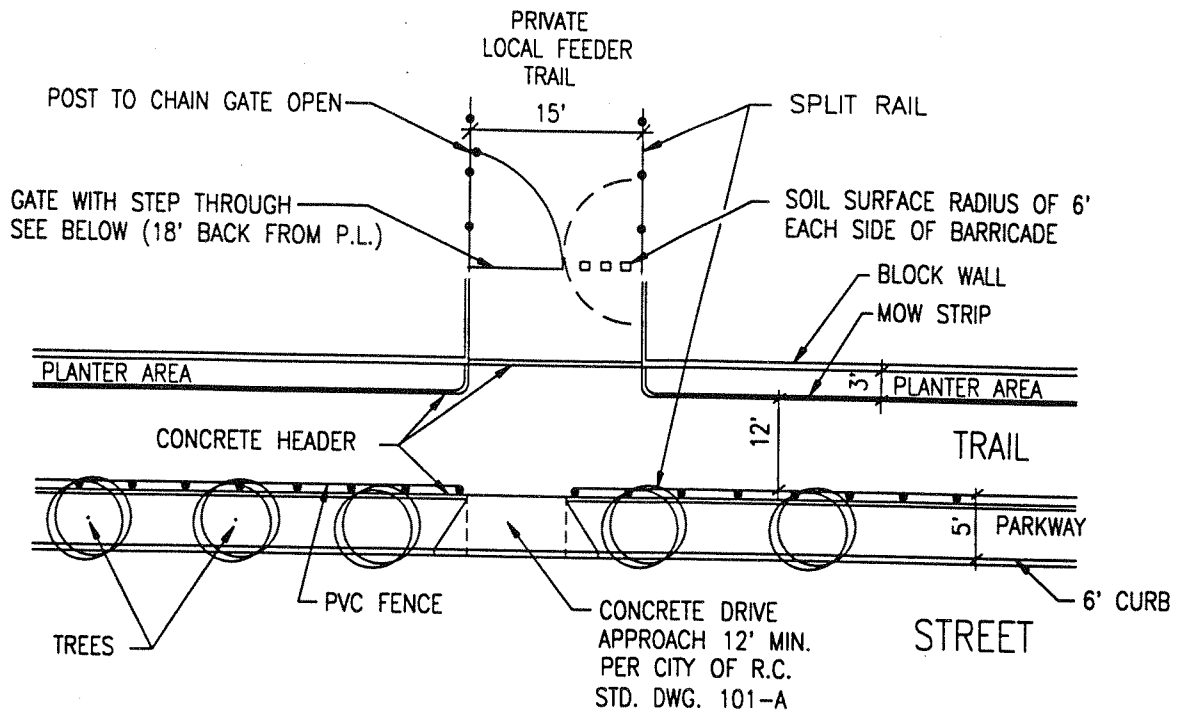
SHEET 1 OF 1

REVIS 7-24-95

REVIS 6-20-95

REVIS 7-20-92

REVIS



**NOTES:**

1. GATE CONSTRUCTED OF 2 1/2" GALVANIZED STEEL PIPE.
2. HINGE CREATED BY WELDING CROSS MEMBERS TO A 3" GALVANIZED STEEL PIPE SLEEVE WITH CAP SLIPPED OVER 2 1/2" UPRIGHT GATE POST.
3. SINK POSTS 40". GATE SHALL NOT SWING INTO PUBLIC R.O.W.
4. CHAIN SHALL BE 3/8" X 1 3/4" X 1 1/4" MILD STEEL AT 18" LONG.
5. LOCK SHALL BE PROVIDED BY THE CITY.
6. SEE TRAIL NOTES STD. NO. 1001

**CITY OF RANCHO CUCAMONGA, CALIFORNIA**

APPROVED BY:

*W. J. McNeil*  
 CITY ENGINEER  
 R.C.E. 24953  
 8/3/75  
 DATE

**FEEDER TRAIL: 15'  
 VEHICLE GATE WITH SIDE ACCESS**

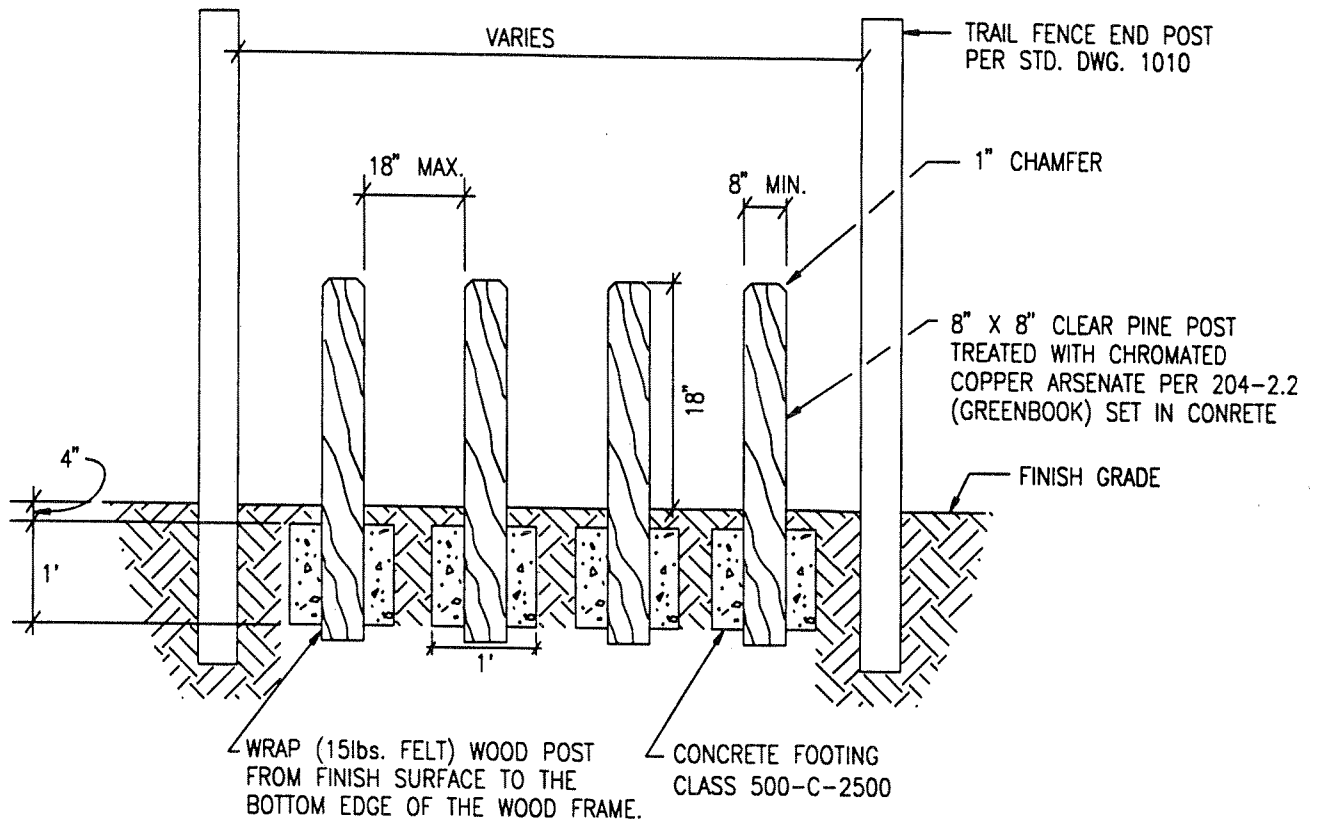
USE WITH STANDARD SPECIFICATIONS FOR PUBLIC WORKS CONSTRUCTION

STANDARD PLAN

1006-C

SHEET 1 OF 1

REVISED 7-20-92 6-20-95 7-24-95



## STEP THROUGH

### NOTE:

1. WOOD SHALL BE WESTERN RED CEDAR OR APPROVED EQUAL  
(NO PRESSURE TREATED WOOD SHALL BE USED)

REVISED 6-20-95 7-24-95

## CITY OF RANCHO CUCAMONGA, CALIFORNIA

APPROVED BY:

*Wu Mail*  
CITY ENGINEER  
R.C.E. 24953  
DATE

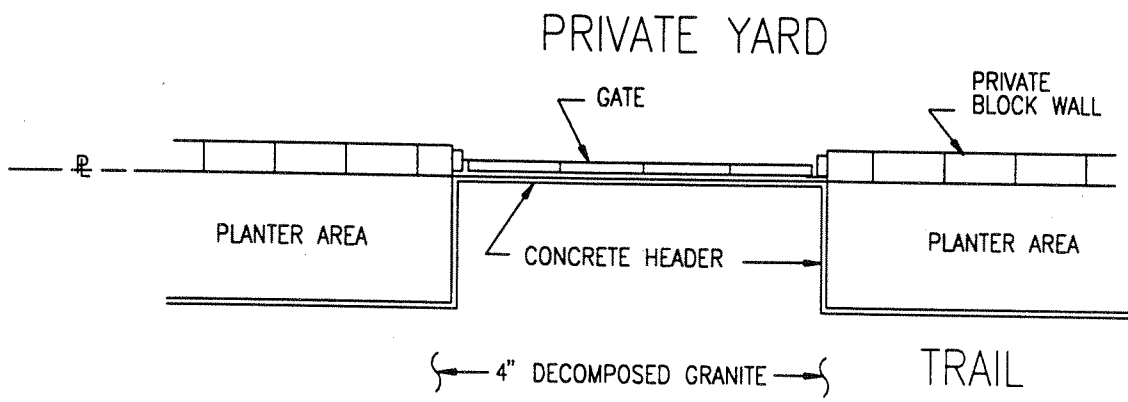
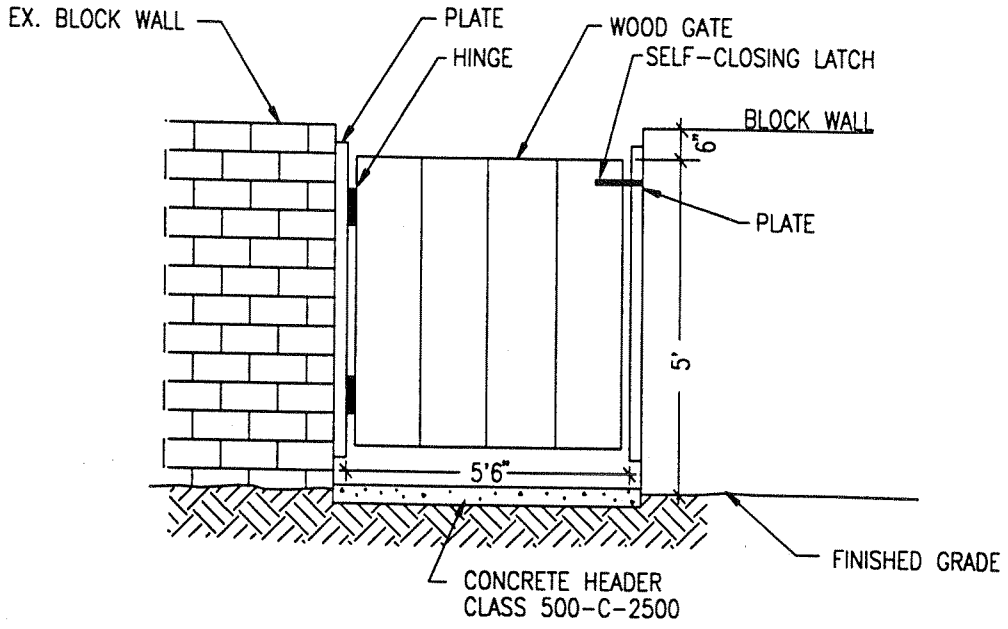
### COMMUNITY TRAIL: PASS-THROUGH DETAIL

USE WITH STANDARD SPECIFICATIONS FOR PUBLIC WORKS CONSTRUCTION

STANDARD PLAN

1007

SHEET 1 OF 1



PLAN VIEW

NOTES:

1. THE GATE SHALL BE A SOLID WOOD SELF-CLOSING GATE TO BE APPROVED BY THE PLANNING DIVISION.
2. MATERIALS SHALL BE WESTERN RED CEDAR OR APPROVED EQUAL.
3. ALL HARDWARE SHALL BE DIPPED GALVANIZED METAL.
4. ALL GATES SHALL OPEN OUT OF ARENAS OR TRAILS.

REVISED 6-20-95 7-24-95  
 CITY ENGINEER R.C.E. 24953

CITY OF RANCHO CUCAMONGA, CALIFORNIA

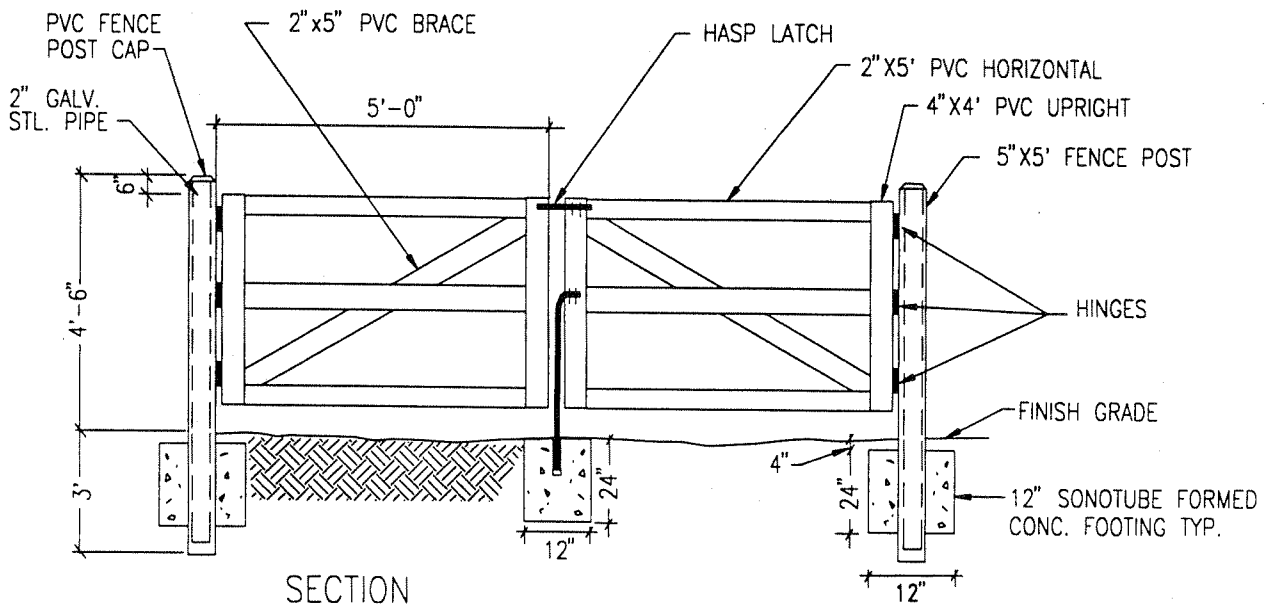
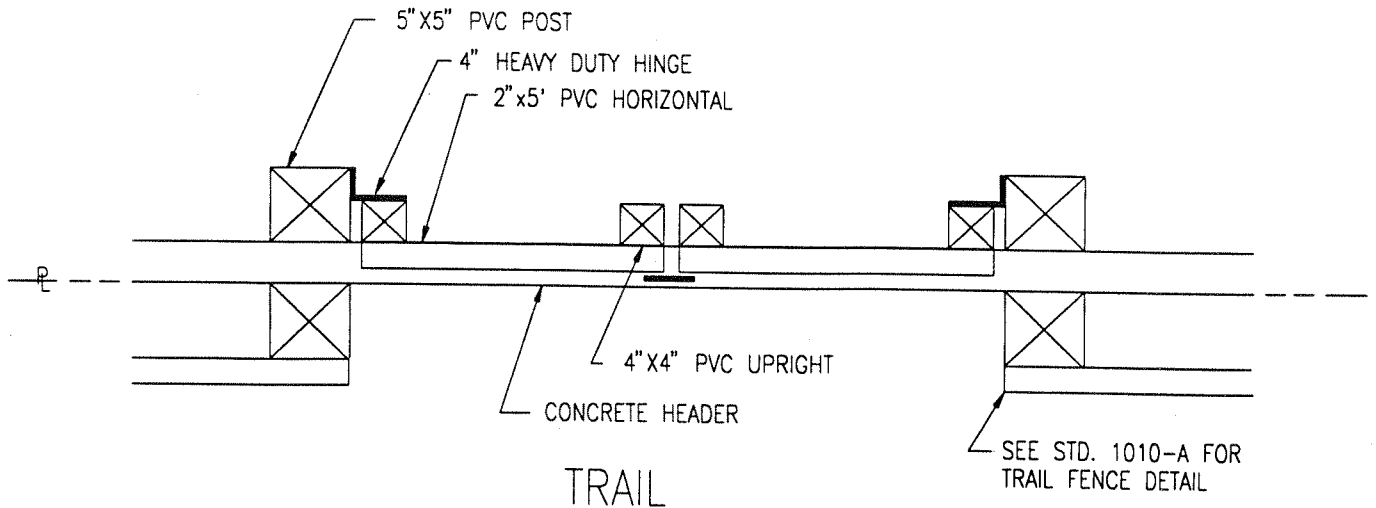
APPROVED BY:  
*W. J. Neil*  
 CITY ENGINEER  
 R.C.E. 24953  
 DATE 8/1/95

COMMUNITY TRAIL:  
 PRIVATE PARKWAY SINGLE GATE

USE WITH STANDARD SPECIFICATIONS FOR PUBLIC WORKS CONSTRUCTION

STANDARD PLAN  
 1008  
 SHEET 1 OF 1

# PRIVATE YARD



## NOTES:

1. ALL PVC GATE POSTS ARE TO BE FILLED WITH CONCRETE, CAPPED, AND ARE TO HAVE CONC. FOOTINGS.
2. MEMBER HINGES SHALL BE ATTACHED WITH 3/8" GALV. CARRAGE BOLTS WITH WASHERS @ NUTS. ALL GATES SHALL OPEN OUT OF ARENAS OR TRAILS.
3. CAP ALL POSTS AND ENDS OF EXPOSED RAILS.
4. INSTALL GALV. STL. PIPE IN EACH GATE POST.

REVISIONS: 7-20-92, 6-20-95

## CITY OF RANCHO CUCAMONGA, CALIFORNIA

APPROVED BY:

CITY ENGINEER  
 R.C.E. 24953

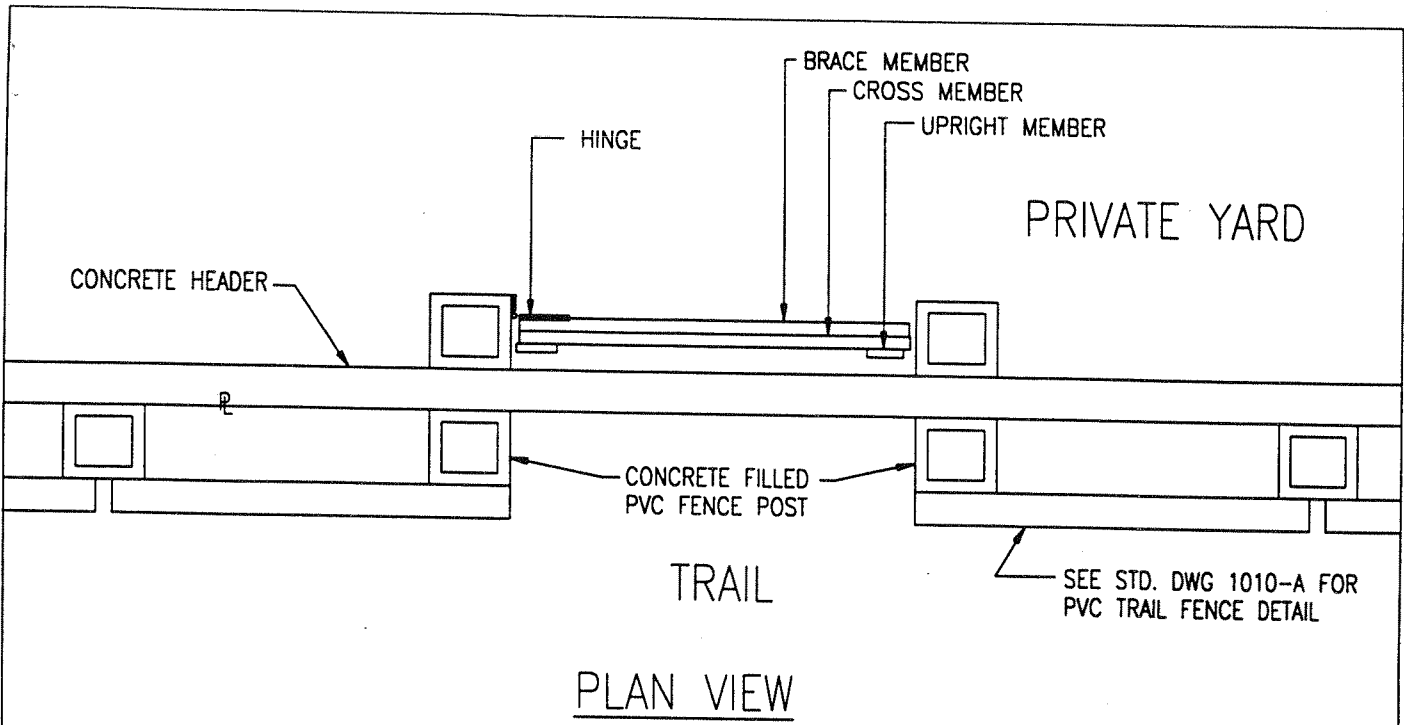
### COMMUNITY TRAIL PRIVATE INTERIOR DOUBLE GATE

USE WITH STANDARD SPECIFICATIONS FOR PUBLIC WORKS CONSTRUCTION

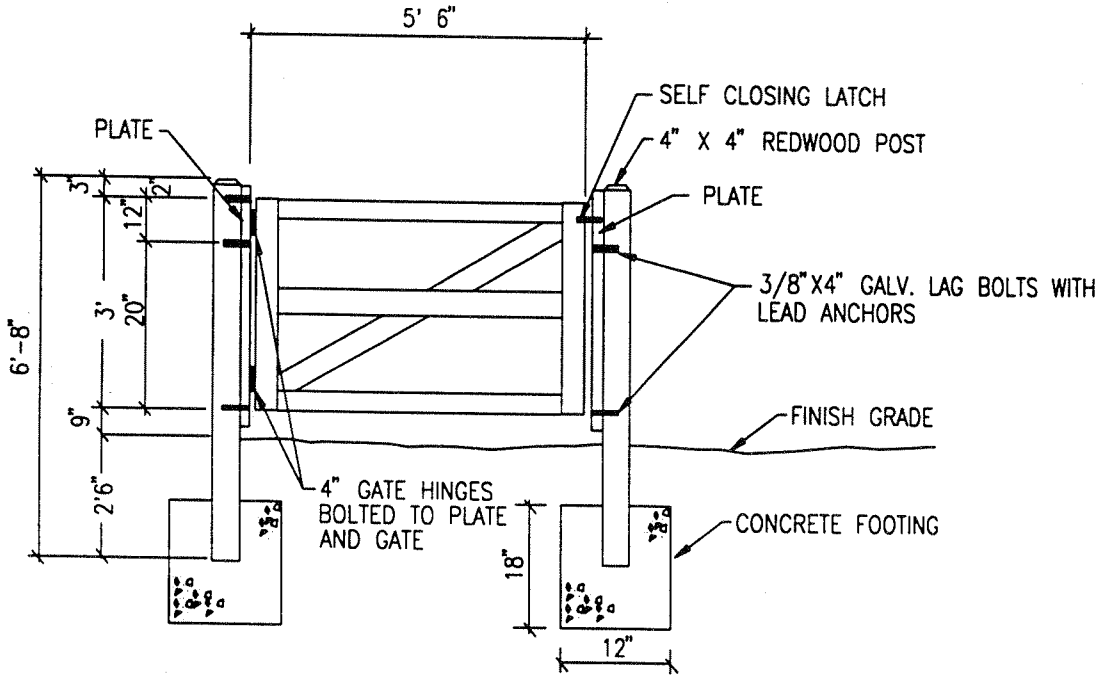
STANDARD PLAN

1009-A

SHEET 1 OF 1



PLAN VIEW



ELEVATION

NOTES:

1. GATE MEMBERS SHALL BE 1"x4" WESTERN RED CEDAR OR EQUAL, PAINTED WHITE
2. MEMBERS SHALL BE ATTACHED WITH 3/8" GALV. BOLTS
3. HINGES SHALL BE ATTACHED TO PLATE PRIOR TO ATTACHING PLATE TO POST. COUNTER SINK BOLTS SO THAT PLATE IS FLUSH WITH POST.
4. GATE IS LOCATED ON PRIVATE PROPERTY AND SHALL BE INSTALLED BY DEVELOPER, SEPARATE FROM ANY PUBLIC IMPROVEMENTS.
4. ALL GATES SHALL OPEN OUT OF ARENAS OR TRAILS.

REVISED 9-1-92 6-20-95 7-24-95

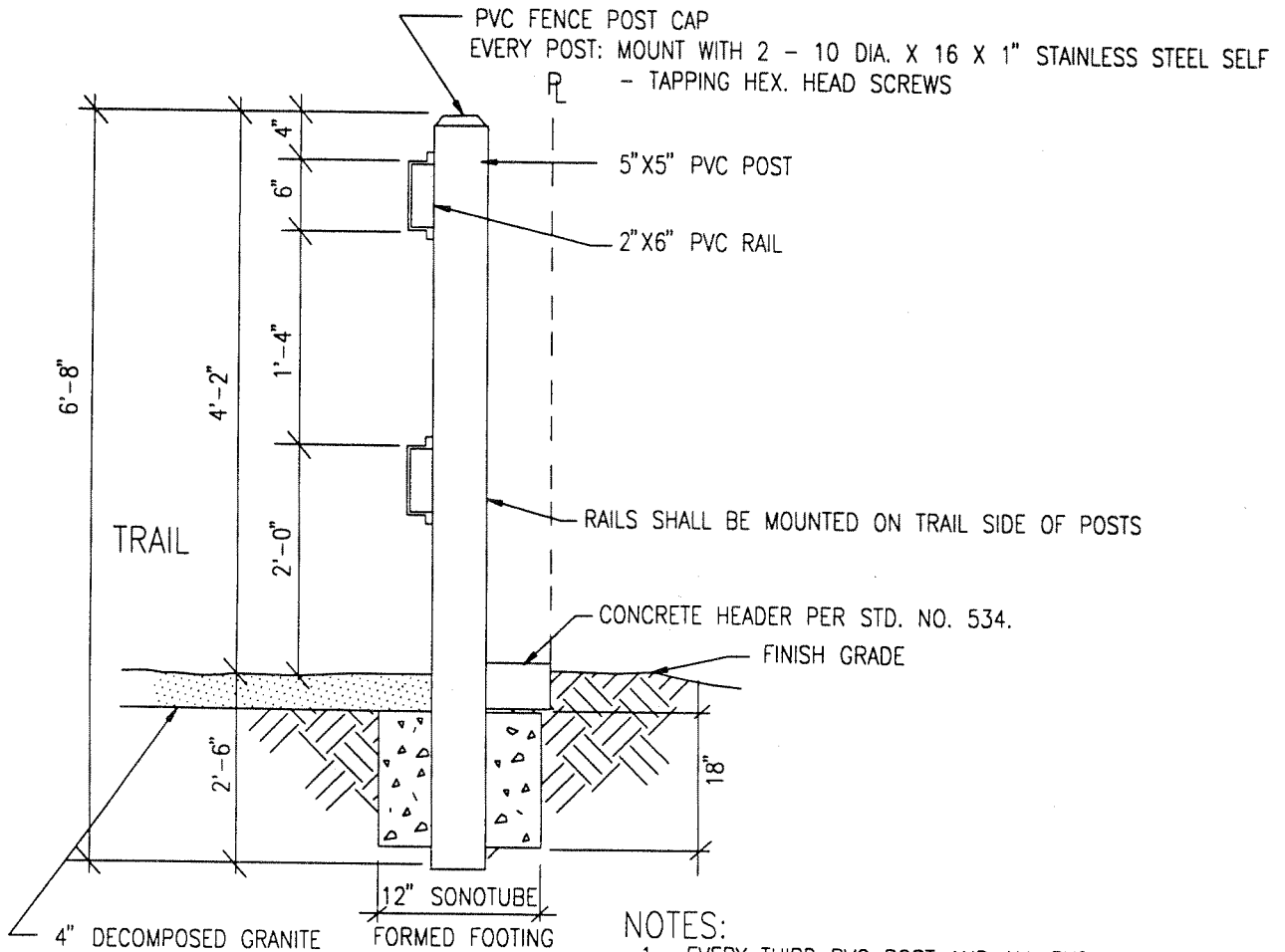
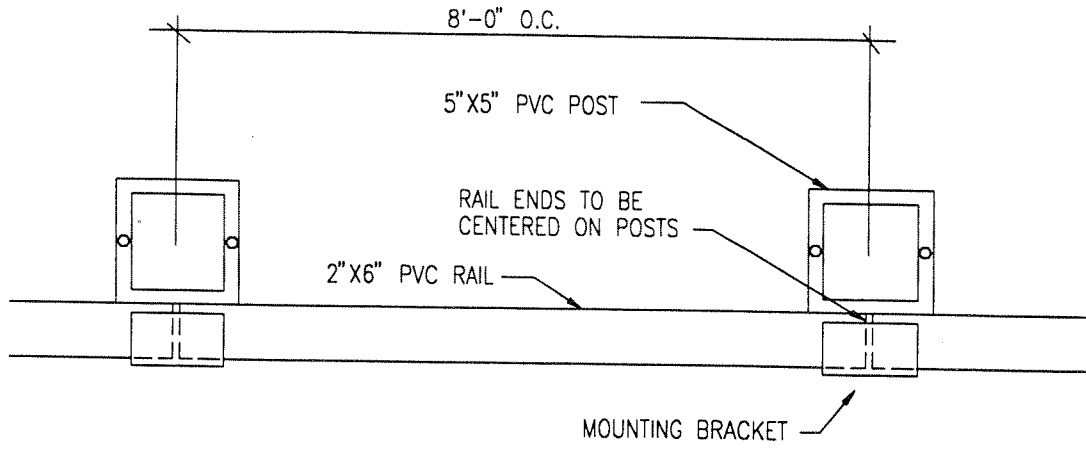
CITY OF RANCHO CUCAMONGA, CALIFORNIA

APPROVED BY:  
*W. J. Meil*  
 CITY ENGINEER  
 R.C.E. 24953  
 DATE

COMMUNITY TRAIL:  
 PRIVATE INTERIOR SINGLE GATE

USE WITH STANDARD SPECIFICATIONS FOR PUBLIC WORKS CONSTRUCTION

STANDARD PLAN  
 1009-B  
 SHEET 1 OF 1



NOTES:

1. EVERY THIRD PVC POST AND ALL PVC POSTS LOCATED AT CHANGES OF DIRECTION OR END POSTS ARE REQUIRED TO BE FILLED WITH CONCRETE
2. CAP ALL POSTS AND ENDS OF EXPOSED RAILS
3. ALL MEMBERS SHALL BE PVC FENCE AVAILABLE FROM COUNTRY ESTATE FENCE OR APPROVED ALTERNATIVE.
4. TRAILS ON CURVES REQUIRE SPECIAL DESIGN.
5. SEE TRAIL NOTES STD. NO. 1001

CITY OF RANCHO CUCAMONGA, CALIFORNIA

APPROVED BY:

*W. J. Neal* 7/15/95  
CITY ENGINEER DATE  
R.C.E. 24953

COMMUNITY TRAIL:  
PVC 2-RAIL FENCE

USE WITH STANDARD SPECIFICATIONS FOR PUBLIC WORKS CONSTRUCTION

STANDARD PLAN

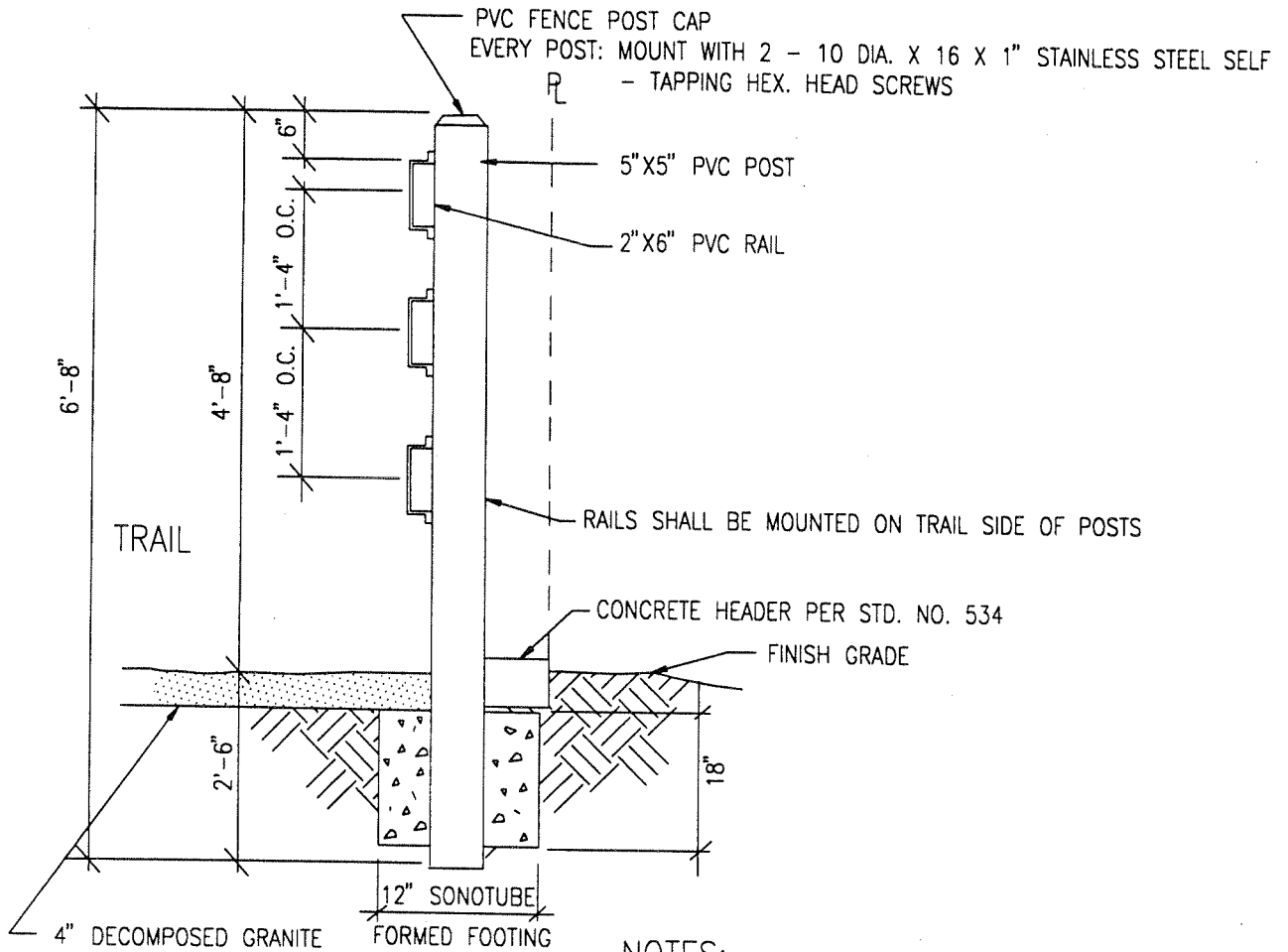
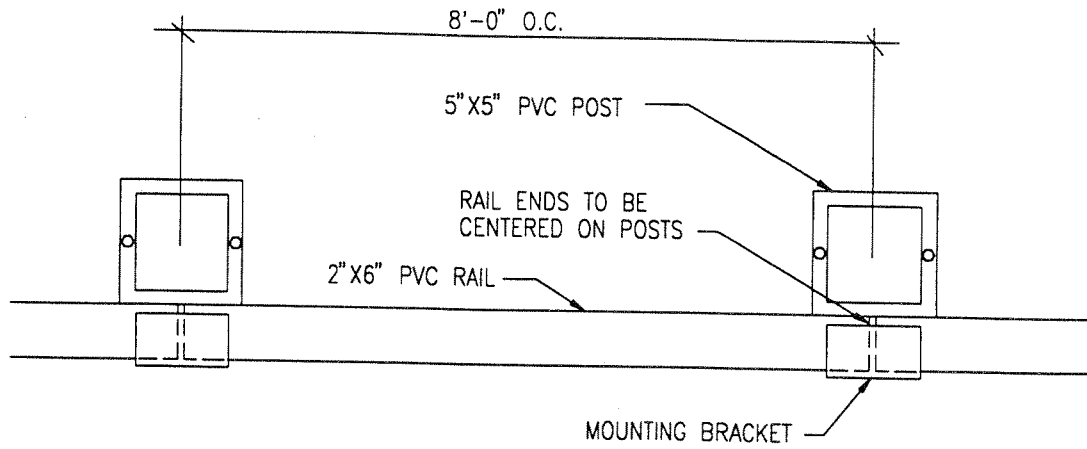
1010-A

SHEET 1 OF 1

REVIS 7-20-92 6-20-95

REVIS 7-20-92

REVIS 7-20-92



**NOTES:**

1. EVERY THIRD PVC POST AND ALL PVC POSTS LOCATED AT CHANGES OF DIRECTION OR END POSTS ARE REQUIRED TO BE FILLED WITH CONCRETE
2. CAP ALL POSTS AND ENDS OF EXPOSED RAILS
3. ALL MEMBERS SHALL BE PVC FENCE AVAILABLE FROM COUNTRY STATE FENCE OR APPROVED ALTERNATE.
4. TRAILS ON CURVES REQUIRE SPECIAL DESIGN
5. SEE TRAIL NOTES STD. NO. 1001.

USE OF 3 RAIL FENCE REQUIRES SPECIAL PERMISSION FROM CITY ENGINEER FOR PEDESTRIAN CONTROL ONLY

REVISED 7-20-92 6-20-95

**CITY OF RANCHO CUCAMONGA, CALIFORNIA**

APPROVED BY:

*W. J. [Signature]* 7/13/95  
CITY ENGINEER  
R.C.E. 24953  
DATE

**COMMUNITY TRAIL:  
PVC 3-RAIL FENCE**

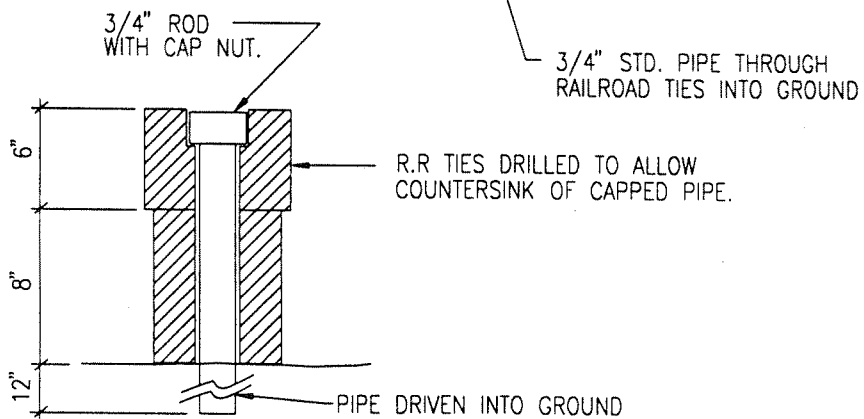
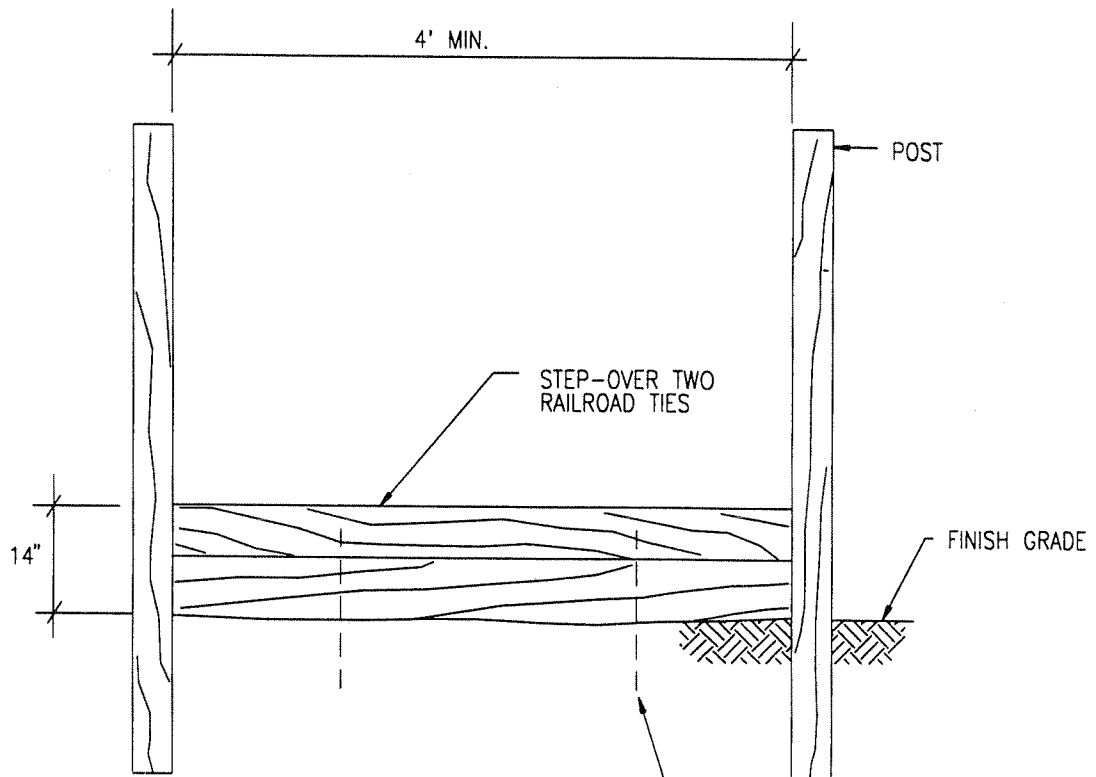
STANDARD PLAN

1010-B

USE WITH STANDARD SPECIFICATIONS FOR PUBLIC WORKS CONSTRUCTION

SHEET 1 OF 1





R.R. TIE DETAIL

NOTES:

1. PRESSURE TREATED AND CREOSOTE SATURATED WOOD PRODUCTS ARE TOXIC AND ARE NOT PERMITTED.
2. THIS BARRIER MAY BE LISTED WITH A STEP-THROUGH SEE STD. DWG. 1007

REVISION 7-20-92 6-20-95

REVISION 7-20-92

CITY OF RANCHO CUCAMONGA, CALIFORNIA

APPROVED BY:

*W. J. Neal* 7/15/95  
 CITY ENGINEER DATE  
 R.C.E. 24953

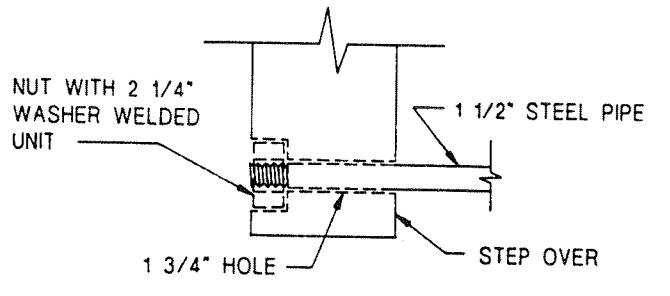
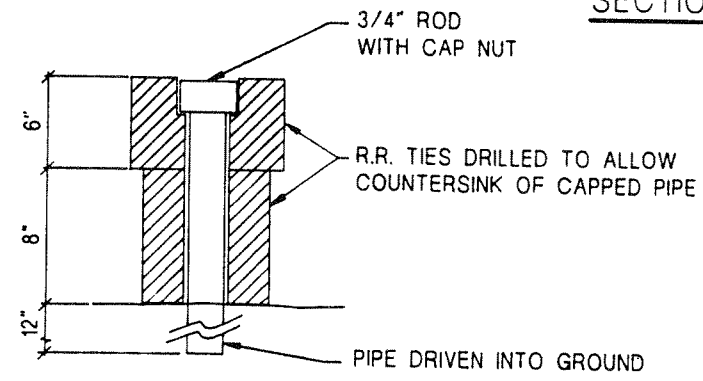
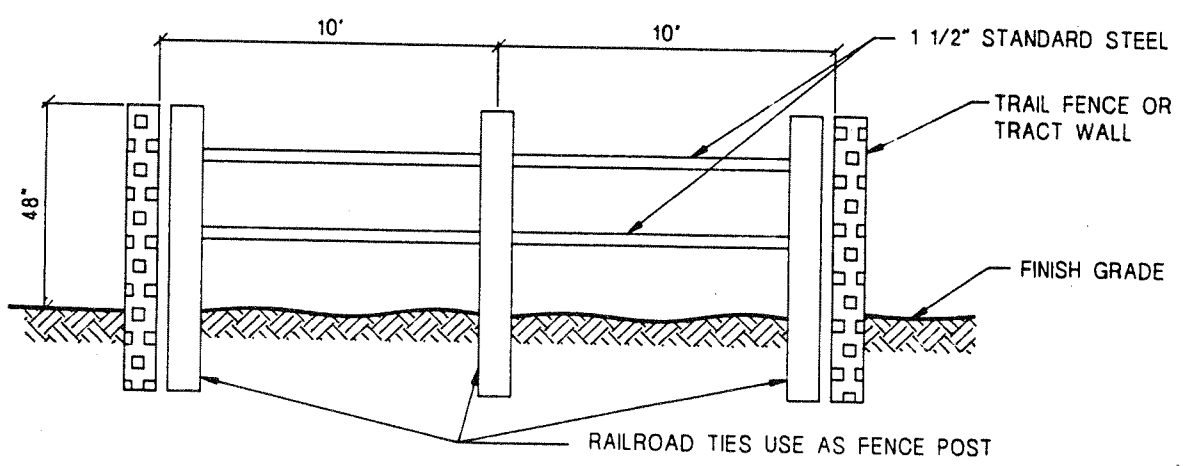
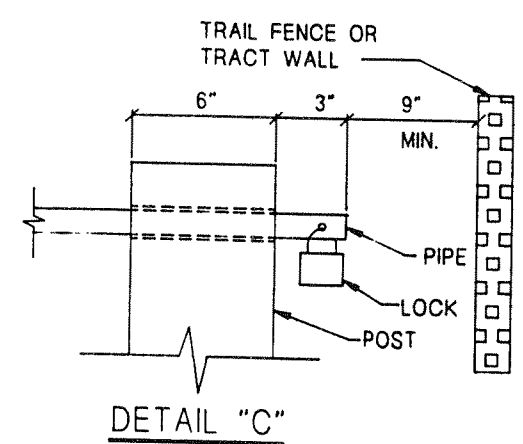
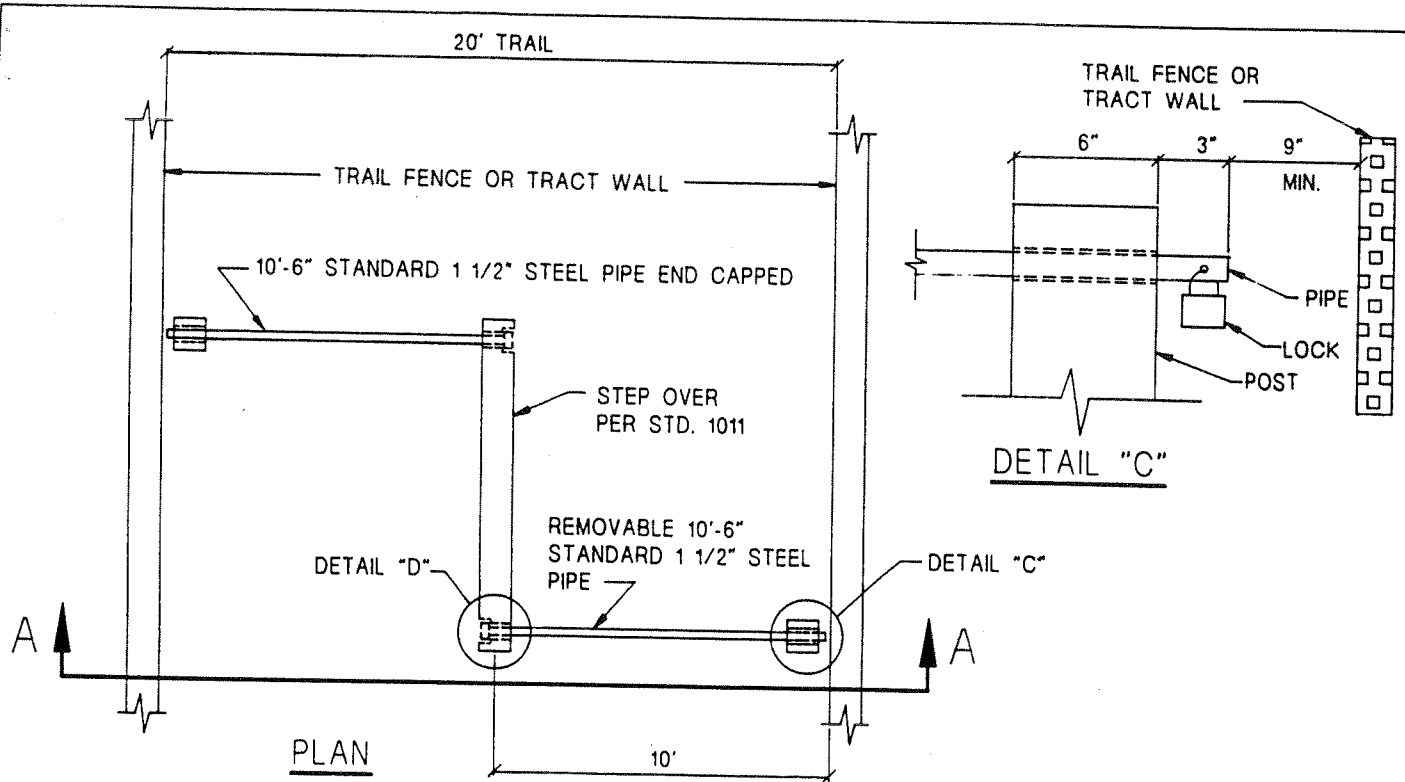
COMMUNITY TRAIL:  
 STEP-OVER DETAIL

USE WITH STANDARD SPECIFICATIONS FOR PUBLIC WORKS CONSTRUCTION

STANDARD PLAN

1011

SHEET 1 OF 1



**CITY OF RANCHO CUCAMONGA, CALIFORNIA**

APPROVED BY:  
*Whoriel* 6-1-92  
 CITY ENGINEER DATE  
 R.C.E. 24953

**BARRIER WITH STEP-OVER**

USE WITH STANDARD SPECIFICATIONS FOR PUBLIC WORKS CONSTRUCTION

STANDARD PLAN  
**1014**  
 SHEET 1 OF 1

REVISED 7-20-92